

LCD WriteScreen® Touch Monitor



Hi-Tech Instruments, Inc.

Sugar Land, Texas, U.S.A.
voice: 281-980-9040
email: info@writescreen.us
<http://www.writescreen.us>

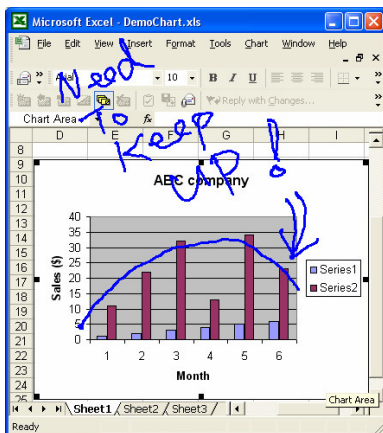


Press Release

The personal computer (PC) has never had a good pen device, and this has limited most popular applications. Many users are unaware or unable to use pen features *already* specified in applications such as PowerPoint®, NetMeeting®, MSN Messenger®, Microsoft® Word, Paint®, and Adobe® Photoshop (Figures 1,2,3,6,8 on the next page). While the mouse, touch pad, track-ball, touch screen, are effective point-and-select devices, they are hardly suitable for writing. Recent developments by Hi-Tech Instruments integrate a pen device with a 15" color LCD monitor called the *LCD WriteScreen® Touch Monitor*. The *LCD WriteScreen® Touch Monitor* precisely detects pen-point to produce high definition output instantly. The *WriteScreen®* comes with hardware, a 15" LCD Touch Monitor, and software, *Hi-Tech Annotation*.

The *LCD WriteScreen® Touch Monitor* utilizes the USB port with a Microsoft® Windows Human Interface Device (HID) driver, which is largely standard in most PCs. Just plug in the USB cable. Microsoft® Windows automatically detects the pen device, and *WriteScreen* is ready to use. Separate driver installation is not needed. *WriteScreen* is pre-calibrated to achieve accuracy within 6 pixels. This product can be used from PC to PC with no need for recalibration. Furthermore, the pressure sensitivity of the "write screen" means it can register touch by any media/stylus, such as the nail of a pointed index finger. A stylus is provided for writing convenience. The stylus also functions as a ball pen and laser pointer (batteries included). The stylus motions emulate the mouse's single and double-click, drag, and button-up. A steady pressure by the stylus enacts a right-button click that summons the drop-down menu.

Hi-Tech Annotation software is included for all other applications lacking a writing capacity; such as, Microsoft® Excel, Internet Explorer, Adobe® PDF Reader, OrCad®, etc... The user invokes a virtual writable image via simple keystrokes. The user can then annotate the running application image. The ability to annotate images raises many exciting possibilities in electronic communication. Annotated images can be saved for later reference. The *Annotation* also supports Pivot® Pro software that lets you rotate your computer display from landscape to portrait orientation.



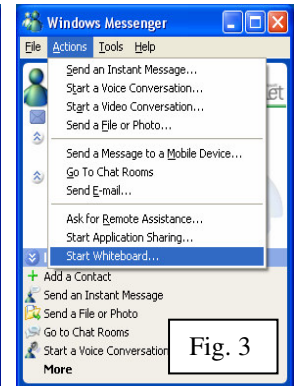
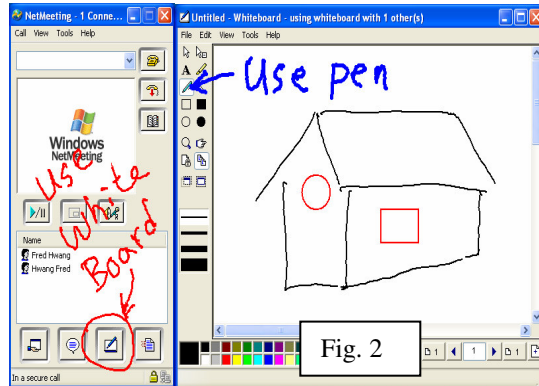
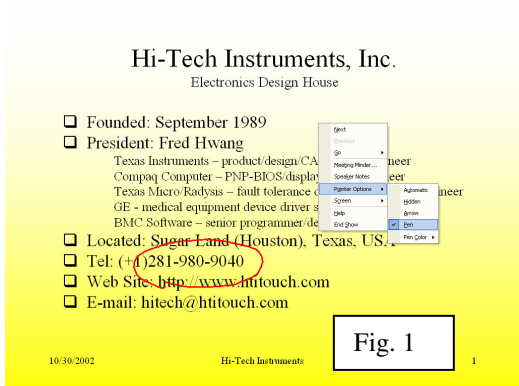
While a pen device is most readily applied to live presentations, it is also good for regular office work. For example, when your customer does not have your specific software on his PC but you want him/her to view your design (send a commented architectural design image file), when you want to post comments on company outlook (express performance trends on an Excel® chart), when verbal explanations will not suffice (call up an MRI image for your patient), when typing just isn't appropriate (have your customer sign his insurance policy electronically), when you want to eliminate expensive fax machine bills (email attachments in color at no additional cost), you will find that having an *LCD WriteScreen® Touch Monitor* is ideal!

The *LCD WriteScreen® Touch Monitor* is useful for handwriting, revision, annotation, signatures, presentations, teaching, document commenting, remote virtual meeting and POS (Point Of Sales). This product works with Windows® 98, Windows 2000, and Windows XP. It is perfect for adding a personal touch to any presentation to engage the audience and impress them with the main points of your message. *WriteScreen®* seamlessly integrates with all applications to achieve greater performance dimensions for teachers, presenters, and businesses of all shapes and sizes.

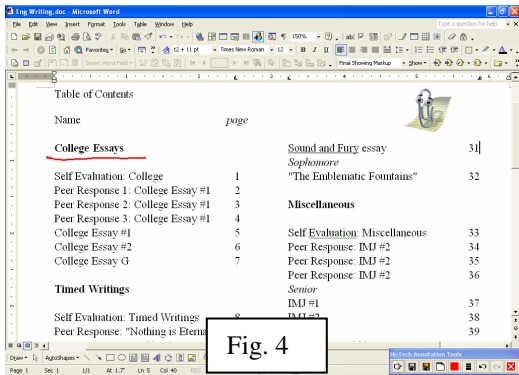
Microsoft, PowerPoint, NetMeeting, Word, Excel & Windows are trademarks of Microsoft Corporation in the United States and other countries. *Orcad Layout and Orcad Capture* are trademarks of Cadence Design Systems, Inc. *Pivot Pro* software is trademark of Portrait Displays, Inc. *BitWare* is trademark of Cheyenne Software, Division of Computer Associates.

Hi-Tech Instruments, Inc. Copyright © 11/22/2005

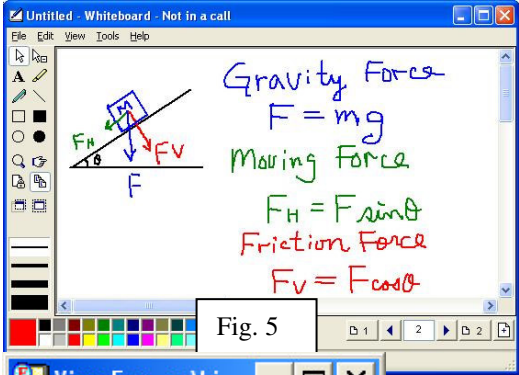
101 Uses of the WriteScreen® Touch Monitor



PowerPoint - right clicking in slide show format will drop down a menu (Fig.1). Select *Pointer Options* and then the *Pen* option, and the page will become writable. With an *LCD WriteScreen® Touch Monitor*, you can easily use a stylus to highlight, annotate, and include footnotes in the middle of your presentation. From watching the projector screen, your audience will be called to attention by your writing action.

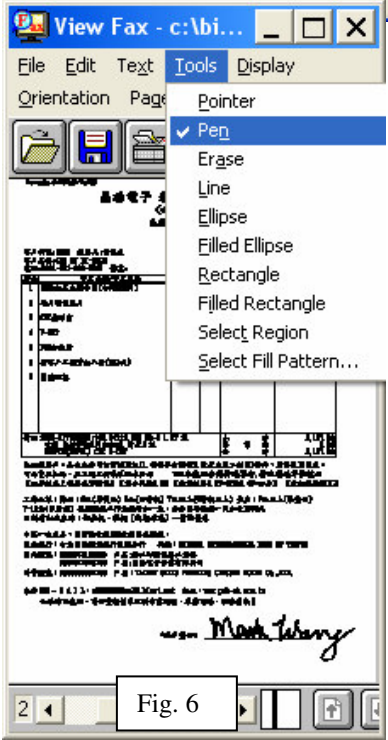


NetMeeting – clicking on the whiteboard icon pops up a writable whiteboard (Fig.2). The contents of the whiteboard can be saved. Freehand drawing is passed over the internet so you can communicate graphics to remote sites efficiently in real time.



Windows Messenger – select the *Start Whiteboard* from the *Actions* menu (Fig.3). Whatever you draw or write, your contact/buddy can see it via internet in real time.

Windows Word – in an opened doc file, with a simple keystroke, the *Annotation* turns the current display into a virtual writable image (Fig.4). You can write onto this image without affecting the original content. A toolbox, located bottom right, contains icons enabling you to save, clear, undo, redo, adjust line color and width, and call a NetMeeting whiteboard (Fig.5). Special menu items are appended to do open/save/erase image.



Bitware – a popular modem bundled software. After receiving a fax for requesting a signature, you can call up the *Pen* option from the *Tools* menu (Fig.6), and sign the “paper” and fax it right back via the PC’s modem.

OrCad – a popular PCB design tool. You can use the *WriteScreen®* software to comment on the design image, save file and email it to your manufacturer (Fig.7).

MSN Messenger – You can personalize your conversations by using the *Handwrite* feature. From the **Handwrite** tab in the conversation window, you can use the *LCD WriteScreen® Touch Monitor* to draw doodles and to handwrite messages (Fig.8).

