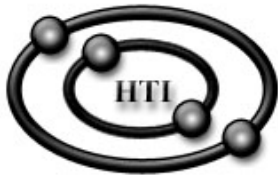


LCD WriteScreen[®] Tablet Monitor



Hi-Tech Instruments, Inc.

Sugar Land, Texas, U.S.A.
voice: 281-980-9040
email: info@writescreen.us
<http://www.writescreen.us>

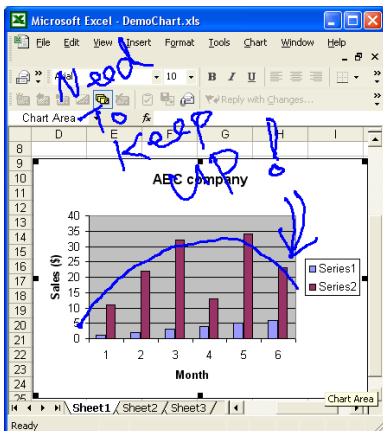


Press Release

The personal computer (PC) has never had a good pen device, and this has limited most popular applications. Many users are unaware or unable to use pen features already specified in applications such as PowerPoint®, NetMeeting®, MSN Messenger®, Microsoft® Word, Paint®, and Adobe® Photoshop (Figures 1,2,3,6,8 on the next page). While the mouse, touch pad, track-ball, and touch screen, are effective point-and-select devices, they are hardly suitable for writing. Hi-Tech Instruments has recently introduced the *LCD WriteScreen[®] Tablet Monitor*. It precisely detects pen-points to produce high definition output instantly. The *WriteScreen[®]* comes with hardware, a 15" LCD Tablet Monitor, and software, *Hi-Tech Annotation*.

The *LCD WriteScreen[®] Tablet Monitor* has a built-in tablet pen input device; it utilizes the USB port with a Microsoft® Windows Human Interface Device (HID) driver, which is largely standard in most PCs. Just plug in the USB cable, Microsoft® Windows automatically detects the tablet pen device, and *WriteScreen* is ready to use. The electronic pen is included and is powered by an AAA battery. The pen motions emulate the mouse's single-left-button and double-left click, drag, button-up and right-button click. The free hand writing is practically human nature. The monitor has a special stand that can be adjusted angles from 15 to 80 degrees for comfort writing.

Hi-Tech Annotation software is included for all other applications lacking a writing capacity; such as, Microsoft® Excel, Internet Explorer, Adobe® PDF Reader, OrCad®, etc... The software provides two (2) major menu functions, **Whiteboard** and **Write Screen**. The **Whiteboard** (Fig. 5) allows teacher to use pen, eraser, text editor and graphic tools (circle, rectangle, line...); to set color and width; to open/save/erase background image; to import visual templates from other applications by selecting areas from the display. The **Write Screen** (Figures 4, 7 on the next page) turns any applications display into a virtual writable image screen; providing handwriting tools such as pen, clear, undo, redo, color, width and save. The written/annotated image screen can be saved as a jpg, bmp, tif, or gif graphic format file. The original applications' data are not altered. The user can, at any applications or displays, pop up the selection menu by double-right clicks, or via simple keystrokes to invoke the Write Screen virtual image. The ability to annotate images raises many exciting possibilities in electronic communication.



While a pen device is most readily applied to live presentations, it is also good for regular office work. For example, when your customer does not have your specific software on his PC but you want him/her to view your design (send a commented architectural design image file), when you want to post comments on company outlook (express performance trends on an Excel® chart), when verbal explanations will not suffice (call up an MRI image for your patient), when typing just isn't appropriate (have your customer sign his insurance policy electronically), when you want to eliminate expensive fax machine bills (email attachments in color at no additional cost), you will find that having an *LCD WriteScreen[®] Tablet Monitor* is ideal!

The *LCD WriteScreen[®] Tablet Monitor* is useful for handwriting, revision, annotation, signatures, presentations, teaching, document commenting, and remote virtual meeting. This product works with Windows® 98, 2000, XP and Windows Vista. It is perfect for adding a personal handwriting to any presentation to engage the audience and impress them with the main points of your message. *WriteScreen[®]* seamlessly integrates with all applications to achieve greater performance dimensions for teachers, presenters, and businesses of all shapes and sizes.

Microsoft, PowerPoint, NetMeeting, Word, Excel & Windows are trademarks of Microsoft Corporation in the United States and other countries. Orcad Layout and Orcad Capture are trademarks of Cadence Design Systems, Inc. BitWare is trademark of Cheyenne Software, Division of Computer Associates.

101 Uses of the WriteScreen® Tablet Monitor



Fig. 1



Fig. 2

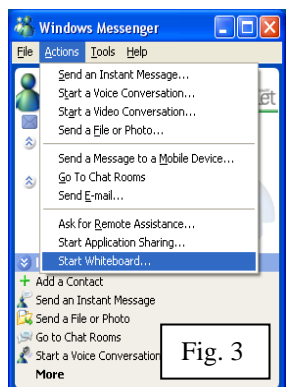


Fig. 3

PowerPoint - right clicking in slide show format will drop down a menu (Fig.1). Select *Pointer Options* and then the *Pen* option, and the page will become writable. With an *LCD WriteScreen® Tablet Monitor*, you can easily use the pen to highlight, annotate, and include footnotes in the middle of your presentation. From watching the projector screen, your audience will be called to attention by your writing action.

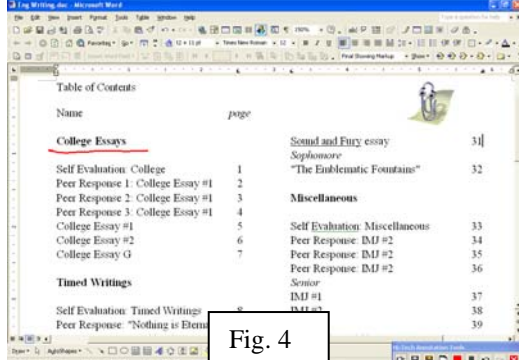


Fig. 4

NetMeeting - clicking on the whiteboard icon pops up a writable whiteboard (Fig.2). The contents of the whiteboard can be saved. Freehand drawing is passed over the internet so you can communicate graphics to remote sites efficiently in real time.

Windows Messenger - select the *Start Whiteboard* from the *Actions* menu (Fig.3). Whatever you draw or write, your contact/buddy can see it via internet in real time.

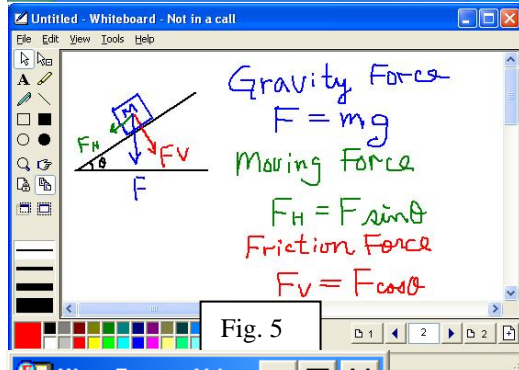


Fig. 5

Windows Word - in an opened doc file, with double-right-clicks popping up menu selection, or a simple keystroke, the *Write Screen* turns the current display into a virtual writable image (Fig.4). You can write onto this image without affecting the original content. A toolbox, located bottom right, contains icons enabling you to save, clear, undo, redo, adjust line color and width, and call a NetMeeting whiteboard (Fig.5). Special menu items are appended to do open/save/erase image.

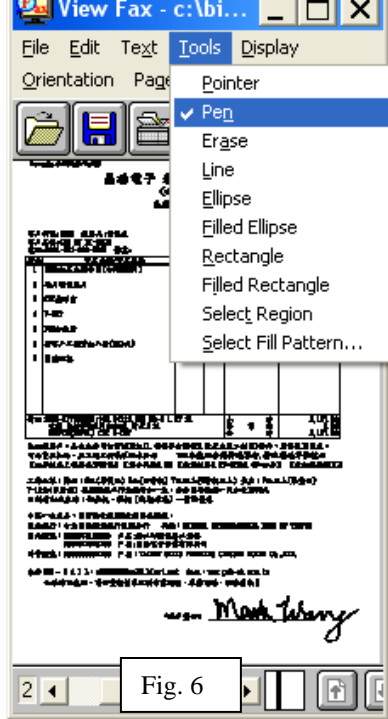


Fig. 6

Bitware - a popular modem bundled software. After receiving a fax for requesting a signature, you can call up the *Pen* option from the *Tools* menu (Fig.6), and sign the "paper" and fax it right back via the PC's modem.

OrCad - a popular PCB design tool. You can use the *WriteScreen®* software to comment on the design image, save file and email it to your manufacturer (Fig.7).

MSN Messenger - You can personalize your conversations by using the *Handwrite* feature. From the **Handwrite** tab in the conversation window, you can use the *LCD WriteScreen® Tablet Monitor* to draw doodles and to handwrite messages (Fig.8).

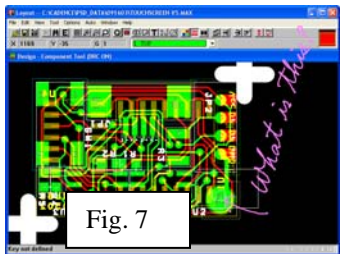


Fig. 7



Fig. 8